

New Products Brochure

Innovative AV Technology Solutions



Solutions for distance learning, HyFlex classrooms, wireless collaboration, working from home, residential, enhanced soft codec conference rooms, and touch free AV.



ATLONA
a **PANDUIT** company

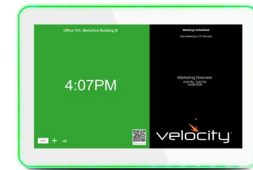


Table of Contents

Application: Home Office Video Conferencing	3	PTZ Cameras with USB, HDMI, and HDBaseT™ Outputs	16
Application: HyFlex Classroom Solution	4	CLSO – HDMI & VGA Presentation Switchers	17
Application: Touch-Free AV	5	SW Series High-Performance Switchers	18
Velocity™ IP-Based AV Control Platform	6	AVANCE™ 4K/UHD HDBaseT Extension Kits	19
Omnistream™ Networked AV Distribution Platform	8	HDR Series 4K HDR Extension and Distribution Solutions	20
WAVE™ Universal Wireless BYOD Gateway	10	Panduit Connectivity and Routing Products	21
Omega™ 4K, HDMI®, DisplayPort™, & USB-C® Conferencing Products	11	Accessories and Cables	22
Opus™ 4K/HDR Video Matrix Switchers	14	Contact Information	23
HDVS HDMI & VGA Switching & Extension Products	15		

Velocity – AV control, room scheduling, and asset management

AN INNOVATIVE AV CONTROL PLATFORM that brings together a unique set of capabilities resulting in easy system scalability and a low cost of ownership. Velocity's IP-based system architecture allows a single, networked processor to serve multiple AV systems simultaneously, leading to overall AV system control efficiency. Velocity also saves valuable time with the ability to configure control systems in minutes, and quickly make system modifications free of extensive programming. **Page: 6**



Omnistream – Uncompromised AV over IP performance and reliability

DELIVERS THE PERFORMANCE AND DEPENDABILITY OF TRADITIONAL AV DISTRIBUTION, plus the unrestricted scalability and cost efficiency of integrating over data networks. **Omnistream Pro** is engineered for the most demanding, mission-critical applications. **Omnistream R-Type** offers performance and dependability optimized for light commercial AV distribution applications. **Page: 8**



WAVE – Wireless AV Experience for collaboration

A UNIVERSAL WIRELESS BYOD GATEWAY for up to four presenters to cast right from their mobile devices. The WAVE also supports digital signage, YouTube live streaming, video playback, and more. **Page: 10**



Omega – AV for modern workspaces and meeting environments

A FAMILY OF SWITCHING, EXTENSION, AND VIDEO PROCESSING SOLUTIONS with features and technologies designed for today's meeting and gathering spaces. **Transmitters:** Connectivity into an AV system for source devices with HDMI or USB-C outputs, as well as USB for web and soft codec conferencing applications. **Switchers:** Compact matrix switchers designed specifically for the needs of today's small to medium-sized presentation applications. **Receivers:** Slim and compact for discreet installation, and a range of features and capabilities beyond receiving HDBaseT from a transmitter or switcher. **Page: 11**



Opus – Uncompromised AV over IP performance and reliability

A SERIES OF HDMI TO HDBASET MATRIX SWITCHERS designed for distribution and extension of 4K HDR in both residential and commercial applications. The Opus Series offers high performance and reliability as well as powerful control and audio system integration features. The Opus Series enables flexible routing to HDBaseT outputs plus two additional HDMI outputs. Available in 4x6, 6x8, and 8x10 configurations, these matrix switchers are HDCP 2.2 compliant, support 4K/UHD video @ 60 Hz with 4:4:4 chroma sampling, and HDMI data rates up to 18 Gbps. **Page: 14**



Application: Home Office Video Conferencing

“Home office” has become a common phrase in households worldwide. The term refers to spaces serving a variety of purposes including parents hosting business meetings or their children learning remotely. In either situation, a robust professional home conferencing AV configuration provides better meeting and learning experiences over that of the typical laptop or computer on its own.

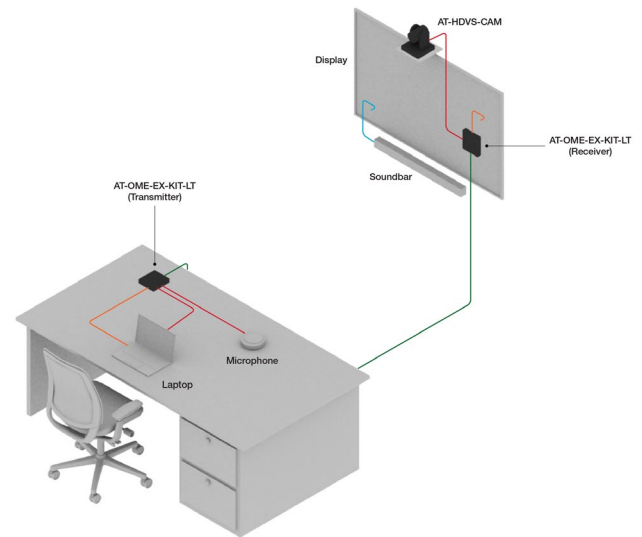
To help improve the online meeting experience, Atlona offers a system ideal for a home office setting that includes the **AT-OME-EX-KIT-LT** extender kit with USB and the **AT-HDVS-CAM** PTZ camera designed specifically for video conferencing.

When users connect their laptop to the system, they gain access to the high-resolution camera and conferencing grade microphone for use with popular applications such as Zoom and Microsoft Teams®. They also benefit from the superior video experience provided by the large flat panel display which allows more critical viewing of meeting content and far end participants.

HDBASET™ SIGNAL EXTENSION – Replicates a meeting room environment, by extending AV and USB data from the laptop on the desk, to the camera and display on the wall.

PROFESSIONAL-GRADE VIDEO – USB camera with 10x optical zoom and pan, tilt, and zoom control provides superior performance over conventional webcams.

BROAD COMPATIBILITY – Works with all popular video conferencing applications and components can be migrated into an office environment or used in other AV systems.



Featured Products



HDBaseT Extender Kit for HDMI® with USB

AT-OME-EX-KIT-LT, see page 13



PTZ Cameras

AT-HDVS-CAM, see page 16

For more detailed information on this application visit: <https://atlona.com/home-office-video-conferencing/>

Application: HyFlex Classroom

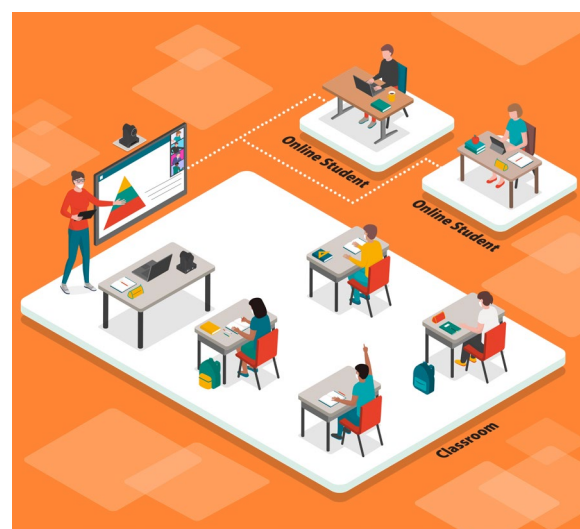
More than ever, schools and students are looking for alternatives to traditional methods of conducting and attending classes. Leading educational institutions are currently pursuing a hybrid / flexible, or HyFlex, course model that provides a variety of options for delivering lesson materials. The purpose of a Hyflex design is to create a classroom AV system that supports simultaneous live in-person and online instruction as well as recordings for on-demand viewing.

The HyFlex AV system consists of an **AT-OME-MS42** matrix switcher mounted at the instructor's desk that provides AV source connections, as well as USB host and peripheral connections for cameras, microphones, and the instructor's PC. Its HDBaseT™ output connects to the **AT-OME-EX-RX** receiver, supporting extension of video content and control signals for the display and USB signals from an **AT-HDVS-CAM** PTZ camera. The **AT-USB-EX100-KIT** USB 2.0 extender brings USB signals from a second camera to the switcher.

USB INTEGRATION – Allows selection of the instructor's microphone and camera for direct instruction or the room microphone and camera for group discussions in video conferencing applications such as Zoom or Microsoft Teams®.

HDBASET SIGNAL EXTENSION – Reliably route video content, control signals, and USB data over Category 6A cable between components located throughout the room.

PROFESSIONAL-GRADE VIDEO – USB cameras with precise control of motorized pan, tilt, and zoom provide proper framing for the instructor and the students.



Featured Products



4x2 Matrix Switcher with USB-C®

AT-OME-MS42, see page 11



HDBaseT Receiver for HDMI® with USB

AT-OME-EX-RX, see page 13



PTZ Cameras

AT-HDVS-CAM, see page 16



USB 2.0 Extender Kit

AT-USB-EX100-KIT, see page 22

For more detailed information on this application visit: <https://atlona.com/hyflex-classroom/>

Visit **atlona.com** for more complete product information, including datasheets and specifications.

Application: Touch-Free AV

When business begins to return to a “new normal,” it will likely be with guidelines to protect employee safety and continue preventing the spread of COVID-19. Of obvious concern is the typical meeting room AV system that requires physical interaction with communal elements such as control systems, computers, and cables. Incorporating hands-free and automation capabilities into these spaces will eliminate these drawbacks.

Imagine entering a meeting space, presenting material, then leaving the room without touching anything but a personal laptop or mobile device. This is made possible through the following features built into the **AT-OME-MS52W** and **AT-UHD-SW-510W** switchers, as well as other Atlona switchers combined with the **AT-WAVE-101** wireless AV gateway.

AUTOMATIC DISPLAY CONTROL – Turn the system and display on or off based on status of an occupancy sensor or an active source connection.

WIRELESS PRESENTATION – Mirror content from personal BYOD devices over Wi-Fi®.

AUTOMATIC INPUT SELECTION – Selects the active input when sources are connected or if there is a change in source.

For meeting environments that cannot be fully automated and require some amount of direct user control, Atlona’s **Velocity™** offers **QR Code BYOD Control**. Velocity generates and displays a QR code on the touch panel GUI, or it can be printed and placed inside the room. Users scan the code with their BYOD device to take full control of the AV system.



Featured Products



5x2 Matrix Switcher with USB and Wireless Link

AT-OME-MS52W, see page 11



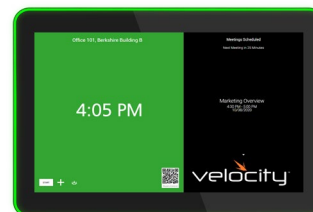
Universal Wireless BYOD Gateway

AT-WAVE-101, see page 10



5x2 Matrix Switcher with Wireless Link

AT-UHD-SW-510W, see page 18



IP-based AV Control Platform

Velocity, see page 6

For more detailed information on Atlona Touch-Free solutions visit <https://atlona.com/touch-free-av/>

Visit **atlona.com** for more complete product information, including datasheets and specifications.

"There was literally no control system that offered better value for this installation. (Velocity) removes the traditional programming hassles as it's all done over IP."

— Sergio Magallon, Project Manager, Audax Communications

AV control, room scheduling, and asset management

Atlona **Velocity™** is an innovative AV control platform that brings together a unique set of capabilities resulting in easy system scalability and a low cost of ownership.

Velocity's IP-based system architecture allows a single, networked processor to serve multiple AV systems simultaneously, leading to overall AV system control efficiency. Velocity also saves valuable time with the ability to configure control systems in minutes, and quickly make system modifications free of extensive programming.

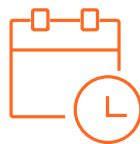
In addition to AV control, Velocity includes calendar integration for room scheduling touch panels, as well as centrally configuring, deploying, and managing AV devices.



NEW

QR BYOD OR TOUCH PANEL

AV control with touch panels or scan the QR code and use your BYOD device



NEW

ROOM SCHEDULING

Supports calendar integration with G Suite, Office 365™, Microsoft Exchange®, and Astra Schedule



ASSET MANAGEMENT

Atlona Management System (AMS™) for configuring and deploying AV devices



NEW

CUSTOMIZABLE GUI

Redesigned tool makes it easier than ever to create elegant user interfaces



FAST CONFIGURATION

Configure control systems in minutes with intuitive navigation and menus



AFFORDABLE SCALABILITY

Integrate multiple AV systems from a single processor and lower your costs



REMOTE SERVICING

Every Velocity system includes Velocity Cloud Lite monitoring and management



ENHANCE COLLABORATION

AV integration into Cisco® and Zoom meeting spaces with video conferencing



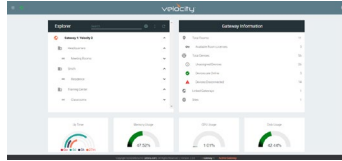
SYSTEM REDUNDANCY

Add a second processor for redundancy and built-in disaster recovery

Velocity

Velocity System Gateways

At the heart of every Velocity system is the gateway, a server that provides processing for a single or multiple rooms of AV control and scheduling. Each gateway also includes the Atlona Management System (AMS) for configuring and managing Atlona devices, as well as Velocity Cloud Lite remote management.



Hardware Gateways

AT-VGW-HW-3 • AT-VGW-HW-10 • AT-VGW-HW-20

Server appliance that supports hundreds of IP device* connections

Three versions available for control of up to 3, 10, or 20 rooms and scheduling up to 6, 20, or 40 rooms respectively

Software Gateway

AT-VGW-SW • AT-VRL-SW

Designed for hosting on standard IT server infrastructure with support for hundreds of IP device* connections

Provides AV control for up to 20 rooms and scheduling up to 40, add additional rooms with **AT-VRL-SW** licenses

All-in-one Control System

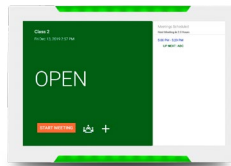
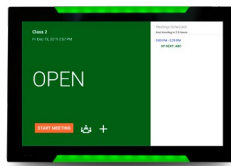
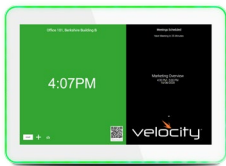
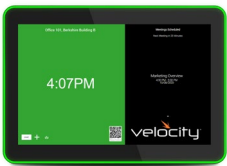
AT-VTPG-1000VL

10" touch panel with contemporary styling and bezel lighting

Integrated Velocity gateway supports one room of control for up to 24 devices and two scheduling panels

NEW

Velocity Products



10" Touch Panels

AT-VTP-1000-BL • AT-VTP-1000-WH

Designed for room scheduling and AV control
10" capacitive touch screen, 1280 x 800 resolution
Glass and universal one-gang wall mount included
Surround bezel LED lighting
Black and white versions available

NEW



8" Scheduling Touch Panels

AT-VSP-800-BL • AT-VSP-800-WH

Designed for room scheduling and AV control
8" capacitive touch screen
1280 x 800 resolution
Bezel LED lighting
Black and white versions available



8" Touch Panels

AT-VTP-800-BL • AT-VTP-800-WH

Designed for AV control and room scheduling
8" capacitive touch screen
1280 x 800 resolution
Black and white versions available



5.5" Touch Panels

AT-VTP-550-BL • AT-VTP-550-WH

Designed for AV control and room scheduling
5.5" capacitive touch screen
720 x 1280 resolution
Black and white versions available



Velocity Command Converters

AT-VCC-IR3-KIT

IP to IR Command Converter with Three Emitters

AT-VCC-RELAY-KIT

IP to Relay / Sensor Signal Converter

AT-VCC-RS232-KIT

IP to RS-232 Command Converter

Mounting Accessories

AT-VTP-VTM

Tabletop mount for AT-VTP-1000VL and AT-VTPG-1000VL touch panels

Provides adjustment for height and operating angle

AT-VTP-TMK

Tabletop mount for AT-VTP-800 8" touch panels

Provides a 65° fixed operating angle

NEW

* Total available IP device capacity for AV system control, room scheduling, and AV asset management is dependent on server hardware.



"OmniStream™ was important to making everything work. The technology offers us not only high transmission quality, but many useful features such as fast switching."

– Johannes Raestrup, Project Engineer, Bimagotec

Uncompromised AV over IP performance and reliability

The ultimate AV distribution platform for integrators to design and build flexible, scalable, and cost-effective AV systems – with best-in-class AV over IP performance and reliability over Gigabit Ethernet.

OMNISTREAM PRODUCT FAMILIES – Tailor an OmniStream networked AV system design to your specific needs:

OMNISTREAM PRO – Networked AV designed for conference rooms, lecture halls, facilities, and more, plus AV distribution over large networks

OMNISTREAM R-TYPE – Networked AV streamlined for light commercial AV distribution applications



4K HDR

Fully compatible with Dolby Vision™, HDR10, and HLG @ 60 Hz



1 GB ETHERNET

Works over new or legacy network infrastructure



PLUG AND PLAY

Ready to go with popular network switches from Cisco®, Araknis, and many others



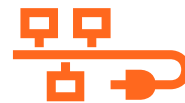
SECURE

Supports IEEE 802.1x, HDCP 2.2, AES-128, and other security protocols



VIDEO WALLS

Simple, effortless setup and configuration for video walls (landscape or portrait screens)



POE

Power all encoders and decoders from a network switch with standard PoE



AV SWITCHING

Virtual auto-switching with grouped or daisy-chained encoders



FAST SWITCHING

Deliver ultra-fast, <10 ms AV switching (1080p or WUXGA output)



The only platform that streams Dolby Vision @ 60 Hz and 12-bit color



Pro Single-Channel Networked AV Encoder

AT-OMNI-111

Single HDMI® input
4K HDR including Dolby Vision @ 60 Hz
Supports VR at 2160x1200 @ 90 Hz
Plug-and-play network switch compatibility
Network security including IEEE 802.1x
Local/PoE-powered



Pro Wallplate Networked AV Encoder

AT-OMNI-111-WP

Single HDMI input
Interchangeable black or white trim kits
4K HDR including Dolby Vision @ 60 Hz
Supports VR at 2160x1200 @ 90 Hz
Plug-and-play network switch compatibility
Network security including IEEE 802.1x
PoE-powered



Pro Dual-Channel Networked AV Encoder

AT-OMNI-112

Dual HDMI inputs with auto-switching
4K HDR including Dolby Vision @ 60 Hz
Supports VR at 2160x1200 @ 90 Hz
Plug-and-play network switch compatibility
Network security including IEEE 802.1x
Local/PoE-powered



Pro Single-Channel Networked AV Decoder

AT-OMNI-121

Single HDMI output
4K HDR including Dolby Vision @ 60 Hz
Supports VR at 2160x1200 @ 90 Hz
Plug-and-play network switch compatibility
Network security including IEEE 802.1x
Audio embedding/de-embedding
Local/PoE-powered



R-Type Dual-Channel Networked AV Encoder

AT-OMNI-512

Dual HDMI inputs
4K HDR including Dolby Vision @ 60 Hz
Plug-and-play network switch compatibility
Local/PoE-powered



R-Type Single-Channel Networked AV Decoder

AT-OMNI-521

Single HDMI output
4K HDR including Dolby Vision @ 60 Hz
Plug-and-play network switch compatibility
PoE-Powered



USB over IP System

AT-OMNI-311

Host side USB to IP adapter
USB host connection for PC
Compatible with USB 2.0 data rates up to 480 Mbps
Plug-and-play network switch compatibility



USB over IP System

AT-OMNI-324

Device side IP to USB adapter
Four-port USB hub
Supports high bandwidth devices such as cameras
Compatible with USB 2.0 data rates up to 480 Mbps
Plug-and-play network switch compatibility

OmniStream provides the essential foundation for designing complete networked AV systems incorporating signal distribution, control, and system management. Atlona **Velocity™** is the perfect complement to OmniStream, featuring highly intuitive configuration and user-friendly operation.

WAVE™

"Atlona simply makes it easy for the presenter to connect and immediately get to work."

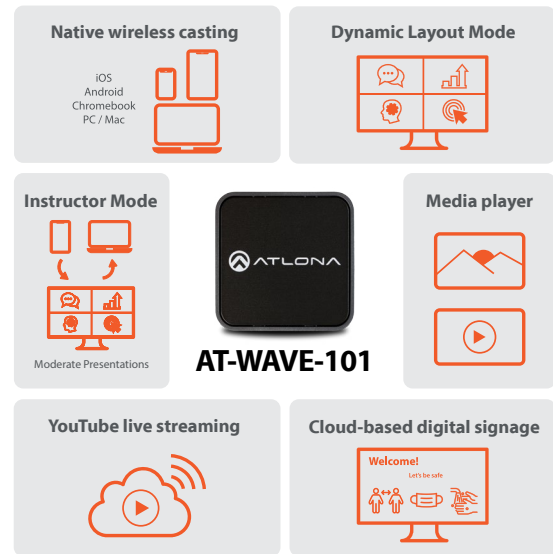
– Thomas Duffany, President, 1 Touch AVS

Effortless screen casting from any mobile device

The Atlona **Wireless Audio Visual Environment (WAVE)** is designed for easy content sharing from iOS®, Android™, Mac®, Chromebook™, or Windows® devices. The **WAVE-101** is a gateway that allows up to four presenters to share their content simultaneously on-screen, with a moderator mode available for managing additional presenters. Wireless BYOD interfacing is simply enabled through the device's native casting protocol, without the need to install an app.

For hands-free, effortless user operation, Dynamic Layout Mode™ is an innovative feature of the WAVE-101 that automatically adapts the on-screen layout to a new incoming content source, or whenever a presenter disconnects from the system.

The WAVE-101 is equipped with a host of convenience features ideal for education and other applications including YouTube Live streaming, support for cloud-based digital signage applications, playback of locally stored images and video, and much more.



Universal Wireless BYOD Gateway

AT-WAVE-101

NEW

ALLOWS SIMULTANEOUS CONTENT SHARING from up to four presenters

INSTRUCTOR MODE allows a user to manage on-screen presenters as well as queued presenters

INTEGRATED WI-FI ACCESS POINT – can be segregated from the facility LAN for security reasons

SUPPORTS CLOUD-BASED digital signage platforms

SUPPORTS YOUTUBE live streaming

DYNAMIC LAYOUT MODE automatically adapts to incoming or disconnected source content (patent pending)

WIRELESS SCREEN CASTING through native AirPlay®, Google Cast™, or Miracast™ protocols

SUPPORTS WIRELESS VIDEO up to 1080p/30 4:2:0 (up to 1080p/60 with Miracast)

WELCOME SCREEN with a static image or video background

LOCAL STORAGE for playback of images and video

PROGRAMMABLE IP OR RS-232 display control (with optional adapter) based on time schedules

CENTRALLY CONFIGURE and manage WAVE-101 units with AMS (Atlona Management System)

"For AV connectivity, Atlona is the go-to brand for performance, reliability and support."

– Santhosh Shenoy, Engineer, Technical Design, Play Technologies

Redefining AV for presentation and collaboration

The **OMEGA Series** is a family of switching, extension, and video processing solutions with features and technologies designed specifically for today's meeting and gathering spaces.

They're essential AV system components made for simple plug-and-play operation to deliver a presentation or video conferencing session, and collaborate with team members. An Omega Series system can be a straightforward, point-to-point setup from meeting table to display, or anchored by an AV switcher with remote endpoints at display or presenter locations.

The Omega Series lets you specify and deliver cost-friendly AV integration solutions for participants to bring in their own devices to present or share content. Omega also makes it very easy to integrate AV systems for video conferencing with popular platforms such as Zoom, Microsoft Teams®, and Cisco® Webex®.

Key Features

- SIMPLE USER OPERATION** – connect and present (no button to press)
- UNIVERSAL AV CONNECTIVITY** for USB-C®, HDMI®, and DisplayPort™
- VIDEO CONFERENCING HUB** – USB interfacing for PCs, cameras, speakerphones, and soundbars
- BUILT-IN AUTOMATION** with auto-switching, display control, and more
- EASILY ADAPTABLE** system designs for a facility, organization, or enterprise

SWITCHER



4x2 Matrix Switcher with USB-C

AT-OME-MS42

- HDMI, USB-C, and DisplayPort inputs
- USB-C input for AV, data, and device charging
- HDBaseT™ and HDMI outputs
- 4K to 1080p downscaling for HDMI output
- USB 2.0 interfacing and extension up to 330 feet (100 meters)
- Audio de-embedding

SWITCHER



6x2 Matrix Presentation Switcher with USB

AT-OME-PS62

- HDMI, USB-C, and HDBaseT inputs
- USB-C input for AV, data, and device charging
- HDBaseT and HDMI outputs
- 4K up/downscaling for HDMI output
- USB 2.0 interfacing and extension up to 330 feet (100 meters)
- Comprehensive audio integration features

SWITCHER

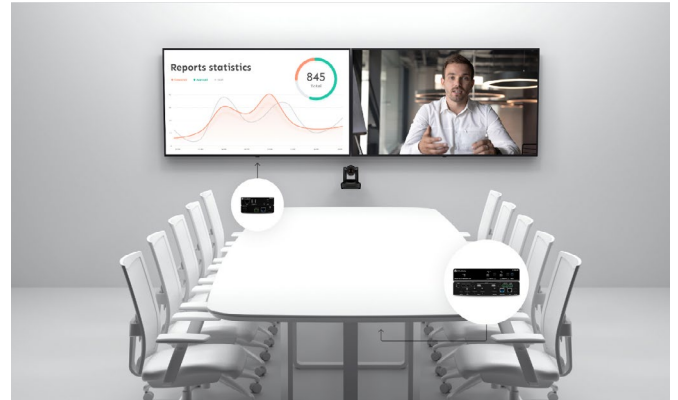


5x2 Matrix Switcher with USB and Wireless AV Input

AT-OME-MS52W

- HDMI, USB-C, DisplayPort, and wireless AV inputs
- USB-C input for AV, data, and device charging
- HDBaseT and HDMI outputs
- Native screen casting with AirPlay®, Google® Cast™, and Miracast™
- USB 2.0 interfacing and extension up to 330 feet (100 meters)

NEW



zoom



cisco Webex

OMEGA Series

SWITCHER



2x1 Switcher for HDMI and USB-C with USB Hub

AT-OME-MH21

HDMI and USB-C inputs
Integrated USB 3.0 hub
4K/UHD capability @ 60 Hz / 4:4:4 chroma sampling
4K to 1080p downscaling
Audio de-embedding

NEW

SWITCHER



3x2 Matrix Switcher for HDMI and USB-C

AT-OME-SW32

Selectable AV switching modes
4K/UHD capability @ 60 Hz / 4:4:4 chroma sampling
Support for HDR formats
4K to 1080p downscaling
Audio de-embedding

SWITCHING TRANSMITTER



3x1 Switcher for HDMI and USB-C

AT-OME-ST31A

Mirrored HDBaseT and HDMI outputs
Designed for remote powering
Local powering available with optional power supply
4K to 1080p downscaling for HDMI output
Audio de-embedding

SWITCHING TRANSMITTER



Wallplate Switcher for HDMI and USB-C with USB Hub

AT-OME-SW21-TX-WPC

2x1 switcher and HDBaseT transmitter
US one-gang enclosure
Interchangeable black or white trim kits
USB 2.0 interfacing and extension up to 330 ft (100 m)
Remote powering

NEW

TRANSMITTER



HDBaseT Transmitter for HDMI with USB

AT-OME-EX-TX

Transmitter for HDMI, Ethernet, power, control, and USB
USB 2.0 interfacing and extension up to 330 ft (100 m)
Remote powering

TRANSMITTER



Wallplate Transmitter for HDMI with USB

AT-OME-EX-TX-WP

Transmitter for HDMI, power, control, and USB
US one-gang enclosure
Interchangeable black or white trim kits
USB 2.0 interfacing and extension up to 330 ft (100 m)
Remote powering

TRANSMITTER



Wallplate Transmitter for USB-C

AT-OME-EX-TX-WPC

Transmitter for USB-C, power, control, and USB
USB-C input for AV and data
US one-gang enclosure
Interchangeable black or white trim kits
USB 2.0 interfacing and extension up to 330 ft (100 m)
Remote powering

TRANSMITTER



Wallplate Transmitter for HDMI and USB-C

AT-OME-EX-TX-WP-E

Transmitter for HDMI, Ethernet, power, control, and USB
Two-gang enclosure
Interchangeable EU/UK trim kits
USB 2.0 interfacing and extension up to 330 ft (100 m)
Remote powering

RECEIVER / SCALER



HDBaseT Receiver/Scaler with HDMI input and USB

AT-OME-SR21

Receiver for HDMI, Ethernet, power, control, and USB
 USB 2.0 interfacing and extension up to 330 ft (100 m)
 4K up/downscaling
 Remotely powers HDBaseT transmitter
 Dual Ethernet ports and integrated network switch
 Contact closure for screen or display lift control

RECEIVER



HDBaseT Receiver for HDMI with USB

AT-OME-EX

Receiver for HDMI, Ethernet, power, control, and USB
 USB 2.0 interfacing and extension up to 330 ft (100 m)
 Supplies or receives power over HDBaseT

RECEIVER



HDBaseT Receiver for HDMI with Audio

AT-OME-RX11

Receiver for HDMI, Ethernet, power, and control
 Remotely powers HDBaseT transmitter
 Audio de-embedding

RECEIVER / SCALER



Dual HDBaseT Receiver/Scaler with HDMI input

AT-OME-RX31

Receiver for HDMI, Ethernet, power, and control
 Two HDBaseT inputs and an HDMI input
 4K up/downscaling
 Remotely powers two HDBaseT transmitters
 Dual Ethernet ports and integrated network switch
 Contact closure for screen or display lift control

RECEIVER / SCALER



HDBaseT Receiver/Scaler with HDMI input

AT-OME-RX21

Receiver for HDMI, Ethernet, power, and control
 HDBaseT and HDMI inputs
 4K up/downscaling
 Remotely powers HDBaseT transmitter
 Dual Ethernet ports and integrated network switch
 Contact closure for screen or display lift control

EXTENDER KIT



Wallplate HDBaseT TX/RX Kit for HDMI with USB

AT-OME-EX-WP-KIT-LT

Extender kit for HDMI, power, control, and USB
Extends up to 230 feet (70 meters) @ 1080p, or up to 130 feet (40 meters) @ 4K/UHD using CAT6a/7 cable
 US one-gang enclosure
 Interchangeable black or white trim kits
 USB 2.0 interfacing and extension up to 130 ft (40 m) for 4K/UHD video
 Transmitter powered by receiver

EXTENDER KIT



HDBaseT TX/RX Kit for HDMI with USB

AT-OME-EX-KIT

Extender kit for HDMI, Ethernet, power, control, and USB
Extends 4K/UHD video up to 330 feet (100 meters) with CAT6/6a/7 cable
 USB 2.0 interfacing & extension up to 330 ft (100 m) for 4K/UHD video
 Transmitter powered by receiver

EXTENDER KIT



Wallplate HDBaseT TX/RX Kit for HDMI with USB

AT-OME-EX-WP-KIT

Extender kit for HDMI, power, control, and USB
Extends 4K/UHD video up to 330 feet (100 meters) with CAT6/6a/7 cable
 US one-gang enclosure
 Interchangeable black or white trim kits
 USB 2.0 interfacing and extension up to 330 ft (100 m)
 Transmitter powered by receiver

EXTENDER KIT



HDBaseT TX/RX Kit for HDMI with USB

AT-OME-EX-KIT-LT

Extender kit for HDMI, power, control, and USB
Extends up to 230 feet (70 meters) @ 1080p, or up to 130 feet (40 meters) @ 4K/UHD using CAT6a/7 cable
 USB 2.0 interfacing & extension up to 130 ft (40 m) for 4K/UHD video
 Transmitter powered by receiver



"This system addresses the requirements for high-end AV distribution in the home that we see emerging as a common request from residential customers."

– Esmond Duong, Technology Manager, Digital Installers

4K HDR matrix switching

The Atlona **Opus Series** is the essential, no-compromise 4K HDR distribution solution for premium residential installations requiring whole-house AV distribution over HDBaseT™. With Opus, rest assured that you'll experience the latest in high dynamic range (HDR) video technology today and for years to come.

Key Features

- HDMI® TO HDBASET matrix switchers – 4x6, 6x8, and 8x10
- HDR FORMATS: HDR10 @ 60 Hz, Dolby Vision® @ 30 Hz, and HLG
- FLEXIBLE, INDEPENDENT audio matrix switcher
- TRIGGER RS-232 OR CEC display control on each output
- ENDPOINT OPTIONS: HDBaseT receiver, or 4x1 HDMI + HDBaseT switcher



HDR HDMI to HDBaseT Matrix Switcher 4x6

AT-OPUS-46M

- Four HDMI inputs and HDBaseT outputs
- Two HDMI outputs
- 4K/UHD capability @ 60 Hz with 4:4:4 chroma sampling
- Visually lossless VESA Display Stream Compression
- Flexible, independent audio matrix switcher



HDR HDMI to HDBaseT Matrix Switcher 6x8

AT-OPUS-68M

- Six HDMI inputs and HDBaseT outputs
- Two HDMI outputs
- 4K/UHD capability @ 60 Hz with 4:4:4 chroma sampling
- Visually lossless VESA Display Stream Compression
- Flexible, independent audio matrix switcher



HDR HDMI to HDBaseT Matrix Switcher 8x10

AT-OPUS-810M

- Eight HDMI inputs and HDBaseT outputs
- Two HDMI outputs
- 4K/UHD capability @ 60 Hz with 4:4:4 chroma sampling
- Visually lossless VESA Display Stream Compression
- Flexible, independent audio matrix switcher



HDR HDBaseT Receiver for Opus Matrix Switchers

AT-OPUS-RX

- 4K/UHD capability @ 60 Hz with 4:4:4 chroma sampling
- HDBaseT receiver for HDMI, Ethernet, power, and control up to 330 feet (100 meters)
- Remotely powered by Opus matrix switcher
- Delivers return audio from a TV over HDBaseT



HDR Four-Input HDMI and HDBaseT Switcher

AT-OPUS-RX41

- 4K/UHD capability @ 60 Hz with 4:4:4 chroma sampling
- Three HDMI inputs and one HDBaseT input for HDMI, Ethernet, power, and control up to 330 feet (100 meters)
- Advanced HDMI ARC for flexible audio routing
- Remotely powered by an Opus matrix switcher
- 1080p downscaling for compatibility with HD displays

NEW

HDVS Series

"After a couple successful projects, I started recommending using Atlona for their product reliability and great integrator support."

— Jesse Portillo, System Designer

HDMI® & VGA Switching & Extension Products

The Atlona **HDVS Series** is a family of complete, fully featured AV systems for a wide variety of applications and environments where people gather to communicate and collaborate. A host of advanced features and capabilities enable simplified user operation, system designs ideally sized for huddle rooms and small meeting spaces, and valuable ROI for integrators and end users

For applications requiring video conferencing, Atlona offers the Omega Series with AV plus USB switching, distribution, and extension over HDBaseT™. Please see **Page 11** for more information.



HDBaseT Extender Kit

AT-HDVS-150-KIT

3x1 switcher/transmitter
HD video scaler/receiver
Audio de-embedding
230 ft./70 m transmission



HDBaseT Extender Kit

AT-HDVS-150-WP-KIT

2x1 wallplate switcher/transmitter
HD video scaler/receiver
Audio de-embedding
230 ft./70 m transmission



HDBaseT Transmitter

AT-HDVS-210H-TX-WP

2x1 wallplate switcher/transmitter
Dual HDMI inputs
4K/60 4:2:0
Black and white trim kits included
Also available: **AT-HDVS-210H-TX-WP-KIT**



HDBaseT Transmitter

AT-HDVS-200-TX

3x1 switcher/transmitter
4K/60 4:2:0
Audio embedding
330 ft./100 m transmission

Also available: **AT-HDVS-200-TX-WP** 2x1 wallplate switcher/transmitter



HDBaseT Receiver and Scaler

AT-HDVS-200-RX

HD video scaler/receiver
Contact closure for screen control
Audio de-embedding
330 ft./100 m extension



HDBaseT Receiver and 4K Scaler

AT-HDVS-SC-RX

2x1 switcher/receiver/scaler
HDMI and HDBaseT inputs
Same essential features as the AT-HDVS-200-RX, plus:
Atlona CrystalScale™ Technology
Pristine-quality 4K image scaling and processing

Cameras

"The (Atlona PTZ) camera systems give previously unseen flexibility in the classroom, and we hear consistent praise about how the remote control functionality makes it easy to adjust camera angles in ways that are meaningful to each lesson."

– Bruce Daigle, Principal, St. Patrick Academy

Enterprise-grade, professional quality

These Atlona cameras are ideal for video conferencing and other applications such as lecture capture and distance learning. They're available in black or white, and in models with USB, HDMI®, or HDBaseT™ outputs. All cameras are available in black or white and deliver high performance, professional-quality imaging with video resolutions up to 1080p, as well as fast and accurate auto-focusing, and a fast yet quiet pan and tilt mechanism. They're ideal for a wide range of small to medium-sized meeting spaces, classrooms, training rooms, and many other environments.

Atlona cameras are ideal for use with the Omega™ Series, as well the HDVS-300 and OmniStream™ USB over IP systems.



PTZ Camera with USB

AT-HDVS-CAM

- USB 2.0 interface for video
- Universal PC compatibility through standard UVC (USB Video Class) driver
- H.264 and H.265 IP streaming
- High performance imaging, fine detail, and color rendering
- 1/2.8" low-noise, HD CMOS sensor
- Multi-element zoom lens with 10x optical zoom and a 60.9° horizontal field of view

PTZ Camera with HDMI Output and USB

AT-HDVS-CAM-HDMI

- HDMI output
- USB 2.0 interface for video
- Universal PC compatibility through standard UVC (USB Video Class) driver
- H.264 and H.265 IP streaming
- High performance imaging, fine detail, and color rendering
- 1/2.8" low-noise, HD CMOS sensor
- Multi-element zoom lens with 10x optical zoom and a 60.9° horizontal field of view

NEW

PTZ Camera with HDBaseT Output

AT-HDVS-CAM-HDBT

- HDBaseT output for extending video, power, and camera control
- Remote powering over HDBaseT – local powering available with included power supply
- H.264 and H.265 IP streaming
- High performance imaging, fine detail, and color rendering
- 1/2.8" low-noise, HD CMOS sensor
- Multi-element zoom lens with 10x optical zoom and a 60.9° horizontal field of view

NEW



CLSO Series

"Expectations for this project were high, and I must say that the results lived up to all of our hopes."

— Michael Fleming, Village of Key Biscayne, IT Director

Simplify complex presentation spaces

The Atlona **CLSO Series** addresses an array of AV switching, routing, and processing needs for presentation spaces such as classrooms, lecture halls, conference rooms, divisible rooms, training rooms, and more. The CLSO Series provides interfacing for HDMI® and legacy analog video sources, HDBaseT™ input and output extension, and several other features essential for AV integration in complex presentation spaces.

For applications requiring video conferencing, Atlona offers the Omega™ Series with AV plus USB switching, distribution, and extension over HDBaseT. Please see **page 11** for more information..



AT-UHD-CLSO-824



8x2 4K/UHD Multi-Format Matrix Switcher

AT-UHD-CLSO-824

Three HDBaseT, four HDMI, and one analog video input
Dual, mirrored HDBaseT and HDMI outputs
4K/UHD capability @ 60 Hz / 4:2:0 chroma subsampling
Audio processing features plus matrix mixing
RS-232 routing to local and remote devices



4K/UHD Six-Input Multi-Format Switcher

AT-UHD-CLSO-601

Four HDMI and two analog video inputs
Mirrored HDBaseT and HDMI outputs
4K/UHD @ 30 Hz with integrated scaler
Audio processing features and breakaway switching
RS-232 routing to local and remote devices



4K/UHD Six-Input Multi-Format Switcher

AT-UHD-CLSO-612ED

Two HDBaseT, two HDMI, and two analog video inputs
Mirrored HDBaseT and HDMI outputs
4K/UHD @ 30 Hz with integrated scaler
Audio processing features and breakaway switching
RS-232 routing to local and remote devices

SW Series

"Atlona's commitment to 4K at the time when we had to make our decisions was pretty clear from the outset given the various products they offer to support higher resolutions."

– Christoph Wax, AV Consultant

Built for essential AV integration

The Atlona **SW Series** are dependable HDMI® switchers available with HDMI and HDBaseT™ outputs, plus features for successful AV integration including automatic input selection and display control. The flagship **SW-510W** is a unique, multi-format matrix switcher featuring an input for wireless BYOD.



AT-UHD-SW-510W



Switchers with Single HDMI Output

AT-UHD-SW-51

- Five HDMI inputs
- Automatic input selection
- Supports ARC- Audio Return Channel



Switcher with Mirrored HDMI Outputs

AT-UHD-SW-52

- Five HDMI inputs
- Dual, mirrored HDMI outputs
- Automatic input selection
- Supports ARC- Audio Return Channel



Switcher with Mirrored HDMI and HDBaseT Outputs

AT-UHD-SW-52ED

- Five HDMI inputs
- Mirrored HDBaseT and HDMI outputs
- Automatic input selection and display control
- Remotely powers HDBaseT receiver



Switcher with HDMI and HDBaseT Inputs

AT-UHD-SW-5000ED

- Two HDBaseT and three HDMI inputs
- Mirrored HDBaseT and HDMI outputs
- Automatic input selection and automatic display control
- Remotely powers HDBaseT receiver



Universal Matrix Switcher with Wireless AV Input

AT-UHD-SW-510W

- HDMI, DisplayPort, and USB-C® inputs
- Dedicated wireless BYOD input
- HDMI and HDBaseT outputs
- Native screen casting with AirPlay®, Google® Cast™, and Miracast™
- Also available with USB: **AT-OME-MS52W** (see page 11)

AVANCE™

"Atlona products save us hours in installation and setup time."

– Andy Herbst, Project Manager, Electronic Systems Support.

Versatile 4K/UHD HDMI® Over HDBaseT™ Extension

The Atlona **Avance Series** of HDMI extender kits are the latest generation of reliable HDBaseT extenders for 4K/UHD AV signals. To provide increased performance and reliability, the Avance Series includes key features and technologies to ensure video transmission integrity and quality. The series includes models with a variety of powering and extension distance options plus integration-friendly features to benefit any application.

Key Features

SUPPORT FOR RESOLUTIONS up to 4K/UHD @ 60 Hz 4:2:0

EDID FILTERING - prevents extension of unsupported resolutions to increase the integrity of video transmission

CLOCK STRETCHING - improves interoperability with legacy and low-quality HDMI video sources

HDBaseT LINK TEST - enables easy verification of cabling, termination, and link quality at the point of install

FLEXIBLE POWERING - kits available with local power supplies, TX -> RX remote power, or TX <-> RX bidirectional power

CONTROL/DATA OPTIONS - kits available with no control, extension of RS-232 / IR, or extension of Ethernet / RS-232 / IR



Avance 4K/UHD HDMI Extender Kit

AT-AVA-EX70-2PS-KIT

Supports resolutions up to 4K/UHD @ 60 Hz 4:2:0

Extend 4K up to 40 meters (130 feet) with Category 6/6A

Local power supply for both transmitter and receiver

NEW



Avance Extender Kit with Remote Power

AT-AVA-EX70-KIT

Supports resolutions up to 4K/UHD @ 60 Hz 4:2:0

Extend 4K up to 40 meters (130 feet) with Category 6/6A

Remote power, transmitter powers receiver over HDBaseT

NEW



Avance Extender Kit with Control and Remote Power

AT-AVA-EX70C-KIT

Extend 4K up to 40 meters (130 feet) with Category 6/6A

Extends bidirectional RS-232 and IR control signals

Remote power, transmitter powers receiver over HDBaseT

NEW



Avance Extender with Control and Bidirectional Power

AT-AVA-EX70C-BP-KIT

Extend 4K/UHD up to 40 meters (130 feet) with Category 6/6A

Extends bidirectional RS-232 and IR control signals

Bidirectional remote power, kit may be powered by either transmitter or receiver

HDMI ARC for audio return from the display

NEW



Avance Extender with Ethernet, Control, and Bidirectional Power

AT-AVA-EX100C-BP-KIT

Extend 4K/UHD up to 100 meters (330 feet) with Category 6/6A

Extends bidirectional Ethernet data as well as RS-232 and IR control signals

Bidirectional remote power, kit may be powered by either transmitter or receiver

HDMI ARC for audio return from the display

NEW

HDR Series

"We've always opted for those products which represent the best combination of quality and value. We've had a history of success with Atlona."

– BIS Digital, Inc.

4K HDR integration building blocks

The **AT-JUNO-451** is a compact, problem-solving switcher engineered for 4K/UHD and HDR-capable sources and displays. It's compatible with 4K HDR10 and Dolby Vision™ @ 60 Hz and fully supports video resolutions, audio formats, and color space formats in the HDMI® 2.0b specification. With EDID management, auto-switching, and full control capabilities, the JUNO-451 is at home in residential or commercial applications.

Atlona offers a family of products to extend and distribute 4K/60 4:4:4 and 4K HDR video, all designed to deliver pristine-quality image presentations in residential and commercial applications.



AT-JUNO-451

EXTENDER KIT



HDMI Over HDBaseT™ TX/RX Kit

AT-HDR-EX-70-2PS

HDBaseT extender kit for HDMI up to 230 ft. (70 m)
4K/60 4:4:4
Compatible with 4K HDR10 @ 60 Hz & Dolby Vision @ 30 Hz
HDCP 2.2 compliant
HDBaseT link status testing

EXTENDER KIT



HDMI Over HDBaseT TX/RX with Control and PoE

AT-HDR-EX-70C-KIT

HDBaseT extender kit for HDMI, power, and control up to 230 ft. (70 m)
4K/60 4:4:4
Compatible with 4K HDR10 @ 60 Hz & Dolby Vision @ 30 Hz
HDCP 2.2 compliant
HDBaseT link status testing

EXTENDER KIT



HDMI over HDBaseT TX/RX with Ethernet, Control, PoE, and Audio

AT-HDR-EX-100CEA-KIT

HDBaseT extender kit for HDMI, audio, Ethernet, power, and control up to 330 ft. (100 m)
4K/60 4:4:4
Compatible with 4K HDR10 @ 60 Hz & Dolby Vision @ 30 Hz
HDCP 2.2 compliant
RX to TX audio return via optical pathway
HDBaseT link status testing

MATRIX SWITCHERS



4x4 and 8x8 HDMI to HDMI Matrix Switchers

AT-HDR-H2H-44MA • AT-HDR-H2H-88MA

4K/60 4:4:4
Compatible with 4K HDR10, Dolby Vision, and HLG (Hybrid Log-Gamma) @ 60 Hz
HDCP 2.2 compliant
Independent CEC display control to each output
HDMI audio de-embedding for each output

DISTRIBUTION AMPLIFIERS



Two, Four, and Eight-Output HDMI Distribution Amplifiers

AT-RON-442 • AT-RON-444 • AT-RON-448

4K/60 4:4:4
Compatible with 4K HDR10, Dolby Vision, and HLG (Hybrid Log-Gamma) @ 60 Hz
HDCP 2.2 compliant
EDID management
Supports cascading up to eight units

AUDIO DE-EMBEDDING



4K HDR Multi-Channel Audio Converter

AT-HDR-M2C

HDMI audio de-embedding and multi-channel audio downmixing
4K/60 4:4:4
Compatible with 4K HDR10 & Dolby Vision @ 60 Hz
HDCP 2.2 compliant

Panduit® Products

"They have a lot of different options to serve different capacity needs. Atlona helps us reliably target all this content to very specific destinations."

– Joshua Kell, Horizon AV COO

Panduit Connectivity & Routing Products

Panduit Connectivity & Routing products provide a professional finishing touch for any installation. The collection of above floor raceway, coupler modules, and patch cables are ideal for discreetly installing AV devices and managing cabling for conference rooms, huddle spaces, classrooms, training spaces, and more. Panduit Connectivity & Routing products have been carefully selected to complement Atlona extension, switching, and control devices to deliver robust, reliable, and scalable AV distribution over structured cabling, while also providing a pleasing aesthetic.

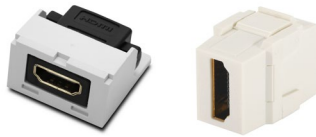
NOTE: Panduit Connectivity & Routing products are available only to Atlona customers in the United States.



Panduit Pan-Way® Above Floor Raceway

AFR4 Series

Designed for installations where it is not possible to route data, AV, and power cables through floor or ceiling conduit. Numerous color and fitting options are available.



Panduit HDMI® and USB Coupler Modules

CMHDMI • CMUSBAA

HDMI and USB couplers for customizing Panduit Mini-Com® table box frames.

NKHDMI • NKUSBAA

HDMI and USB couplers for customizing Panduit NetKey® table box frames.



Panduit TX6A™ 10Gig Patch Cables

UTP6A Series

Category 6A UTP patch cables that include patented MaTriX technology to suppress alien crosstalk.

STP6X Series

Shielded twisted pair cables that offer high performance and excellent EMI suppression for reliable transmission.

Accessories and Cables

"We went with Atlona, based on the variety of solutions they offer to support different sized rooms and requirements."

– Mike LeCates, Associate Director of Operations, Mid South Audio

Problem solvers and finishing touches

Sometimes you just need one more feature to round out a project and this is where Atlona accessories can help.

The **AT-USB-EX100-KIT** is a USB 2.0 extender that makes it easy to add an additional remote USB camera, microphone, or speaker to video conferencing rooms. The **AT-DISP-CTRL** provides automatic control for displays in small meeting rooms. The Atlona Pocket 3H (**AT-PKT-3H**) and **LinkConnect™** cables provide convenient cable connectivity, access, and management for BYOD environments.



USB 2.0 Extender Kit

AT-USB-EX100-KIT

USB 2.0 extension up to 330 feet (100 meters)

Perfect for use with conferencing apps when USB components are in different areas of the room

Transmitter features a USB type B plus two USB type A ports

Receiver features four USB type A ports

Compact enclosures mount in furniture, behind a display, or above a projector

NEW

Display Controller

AT-DISP-CTRL

Ideal for huddle rooms without AV systems

Simple, automated display control via IP, RS-232, IR, or CEC

Programmable display control modes

Local or PoE (Power over Ethernet) powering

Comprehensive display driver selection from the Velocity™ control system database



Architectural Cable Access Enclosure

AT-PKT-3H

Tabletop cable access enclosure

Under-table cable management system

Supplied insert holds three cables in place

Low-profile design for any modern or traditional décor

Convenient under-table bag conceals cables

Also available: **AT-PKT-3H-KIT** with AV cables



LinkConnect HDMI® to HDMI Cable

AT-LC-H2H

HDMI to HDMI cables

Available in 1, 2, and 3 meter lengths

Locking HDMI connector

Lifetime limited product warranty



LinkConnect Mini DisplayPort™ to HDMI Cable

AT-LC-MDP2H

Mini DisplayPort to HDMI cables

Available in 1, 2, and 3 meter lengths

Locking HDMI connector

Lifetime limited product warranty



LinkConnect USB-C® to USB-C Cable

AT-LC-UC2UC

USB-C to USB-C cable

2 meter (6.6 feet) length

Compatible with USB 3.1 Gen 1 specification

Lifetime limited product warranty

Panduit + Atlona: The New Leader in AV Solutions

Atlona is proud to announce it is now a Panduit company, a leading global provider of network infrastructure solutions. The combination of Panduit's cabling and connectivity products and Atlona's wide range of AV solutions supports the growing adoption of AV over IP systems. Now, you can trust one company to provide an end-to-end AV solution for your conference rooms, training rooms, boardrooms, classrooms, and digital signage.

Atlona continues to serve its customers from its Silicon Valley-based global headquarters and from its international headquarters in Zurich. Working with Atlona is business as usual as all sales, customer support, and training teams continue under the new corporate ownership. Most importantly, Atlona's award-winning 10-year warranty continues for all new and existing products.

VISION

Become the Top 3 AV Solutions Provider Globally

OUR MISSION

Offer an AV solution portfolio that is comprehensive, intuitive, high quality, innovative and valued

Atlona Contact Information

Atlona Global Headquarters

Atlona Incorporated
70 Daggett Drive
San Jose, CA 95134 United States
Office: +1 (877) 536-3976 (US Toll-free)
Office: +1 (408) 962-0515 (US/International)

Sales and Customer Service Hours

Monday – Friday: 6:00 a.m. – 4:30 p.m. (PST)

Tech Support Hours – U.S. and Canada

Monday – Friday: 5:00 a.m. – 5:00 p.m. (PST)
Saturday – Sunday: 7:00 a.m. – 4:00 p.m. (PST)

EMEA Headquarters

Atlona International AG
Tödi strasse 18
8002 Zürich
Switzerland
Office and tech support: +41 (43) 508-43-21 (EMEA)

Sales and Customer Service Hours

Monday – Friday: 09:00 – 17:00 (UTC +1)

Tech Support Hours – Europe and Middle East

Monday – Friday: 9:00 a.m. – 5:00 p.m. (UTC+1)
Customer service (order processing): +41 (43) 210-81-04 (EMEA)

Atlona Briefing Centers

SAN JOSE, CALIFORNIA, USA – ATLONA GLOBAL HEADQUARTERS

Tel: +1 (877) 536-3976 (US Toll-Free) Tel: +1 (408) 962-0515 (US/International)

TINLEY PARK, ILLINOIS, USA – WORLD HEADQUARTERS

Tel: +1 (708) 532-1800, ext. 81806

JAPAN

Tel: +81-3-6863-6000

LONDON, UNITED KINGDOM

Tel: +44-208-601-7200

MEXICO CITY, MEXICO

Tel: +52-55-54848010

SCHWALBACH, GERMANY

Tel: +49-69-770626180

SINGAPORE

Tel: +65-6305-7575



